

TESTING EQUIPMENT

HEADLIGHT TESTER



HEADLIGHT TESTER

131-HA Analogue, suitable for left hand drive (LHD), right hand drive (RHD), European type

311-HA Photodiodes, suitable for left hand drive (LHD), European type

321-HA Photodiodes, suitable for right hand drive (RHD), European type

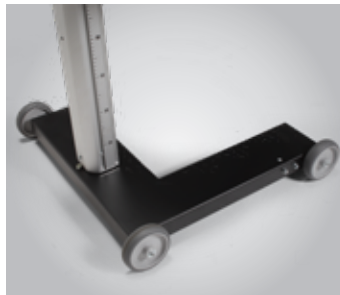
433-HA Camera, suitable for left hand drive (LHD), right hand drive (RHD), European and American type and calibration functions for Matrix LED, DLA, ILS

All models are suitable for motorcycles, passenger cars, vans, trucks and busses



Base

- Same base for wheel and rails for all versions
- Easy adjustment of the planarity
- Column rotation +/- 5° on technopolymer bearings



Column

- Adjustment range - above floor from center of lens 250-1500 mm
- Counterweight for stable test position
- Sliding with four wheels equipped with ball bearings
- Ergonomic driving handle

Optical chamber

- Unique structure for all technologies
- Powder coated steel body, color black
- Cover in thermoformed plastic material, color silver
- Large Fresnel lens protected with glass 280mm x 200mm
- Reverse display support
- Lithium battery (photodiodes and camera versions)



Double laser

Laser unit on the top of the column to easy and correct align the device with the vehicle (for all versions) and Pointer laser for correct centering of the beam source (for analogue and photodiodes version), cross laser for camera

Displays



Printer optional



EMEA-JA
Snap-on Equipment s.r.l. - Via Prov. Carpi, 33 - 42015 Correggio (RE)
Phone: +39 0522 733-411 - Fax: +39 0522 733-479

France
Snap-on Equipment France - ZA du Vert Galant - 15, rue de la Guivernone BP 97175
Saint-Ouen-l'Aumône - 95056 Cergy-Pontoise CEDEX
Phone: +33 134 48 58-78 - Fax: +33 134 48 58-70

Germany
Snap-on Equipment GmbH - Konrad-Zuse-Straße 1 - 84579 Unterneukirchen
Phone: +49 8634 622-0 - Fax: +49 8634 5501

Italy
Snap-on Equipment s.r.l. - Via Prov. Carpi, 33 - 42015 Correggio (RE)
Phone: +39 0522 733-411 - Fax: +39 0522 733-410

United Kingdom
Snap-on Equipment Ltd. - Unit 17 Denney Road, King's Lynn - Norfolk PE30 4HG
Phone: +44 118 929-6811 - Fax: +44 118 966-4369

Part of the machines is illustrated with optional extras which are available at extra cost. Technical modifications reserved.

Cod.: 1805 111 - 05/2018